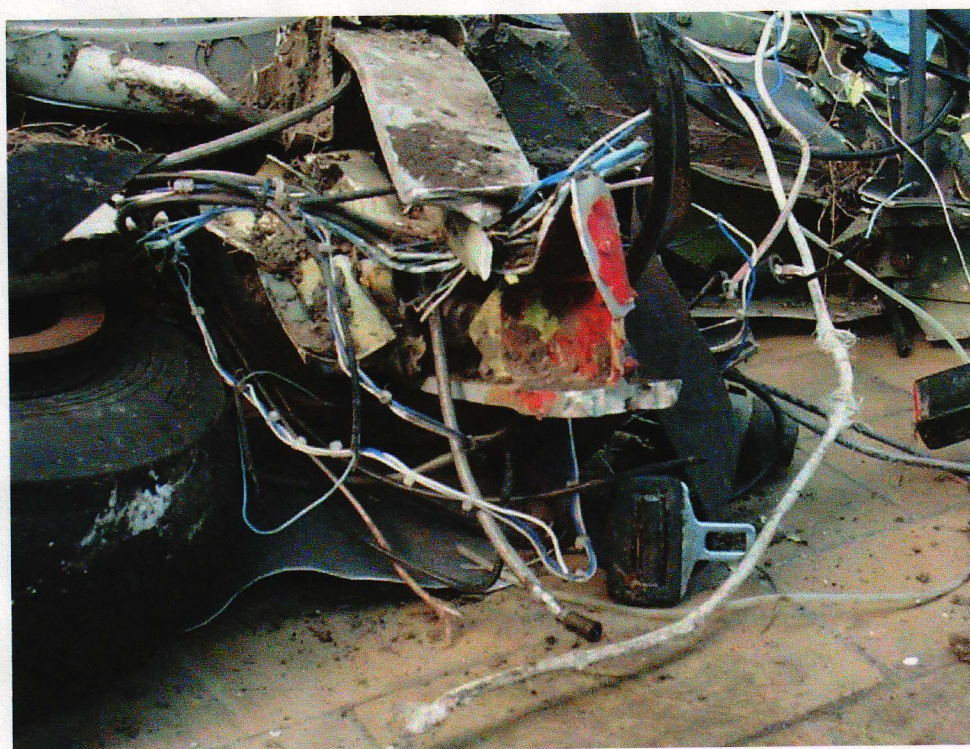




Picture 9 : View on the remains of the LH wing. Here the wing lies with its upper surface up. Note the I-beam in the middle of the picture where the fracture occurred.



Picture 10 : Detail of the LH wing I-beam from picture 1. The fracture surface shows chevron marks typical of fast overload failure. Note the heavy deformation attributed to the collapse of the spar web.

* The results are only applicable to the tested objects

* No parts of this report may be reproduced without written permission of Materials Engineering Department.